



Lift Cars

# For every lift car - a perfect finish

01

## **A design to suit every setting**

Whether your building is traditional or cutting-edge, no-frills or palatial, you are sure to find a lift car in our extensive range which will suit it perfectly and give your lift the personal touch that you are looking for.

---

02

## **Numerous interior design options**

All our different lift car models offer an ample choice of wall and floor finishes, lighting fixtures, operating and display panels, handrails and other design details.

---

03

## **Adaptable to any shaft size or space**

We manufacture our lift cars in a wide range of load capacities and dimensions, and we can build each car to suit the exact shaft size, thereby maximising usable space.

---

04

## **Easy to install**

Every lift car is fully assembled and then disassembled before it leaves our factory, which guarantees its perfect operation and faster installation on-site.

---

05

## **Proven excellence**

Our lift cars are internationally recognised for their quality of manufacture, our use of only the very best materials and components, their durability and their reliability.

---

06

## **European manufacture, right down to the last detail**

We design and build our own lift cars from start to finish, in our own manufacturing plants in Santander, on the north coast of Spain.

---

# Index

## 04 The 210 Series

---



## 10 The 220 Series

---



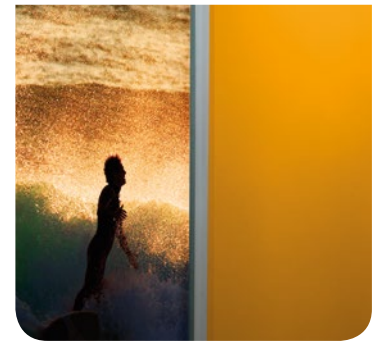
## 22 The 310 Series

---



## 28 The 350 Series

---



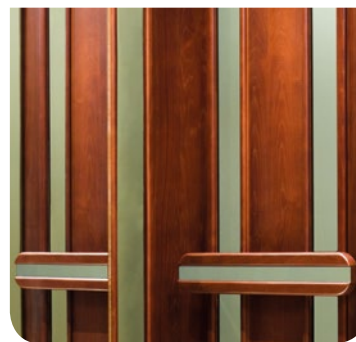
## 34 The 550 Series

---



## 44 The 710 Series

---



## 54 How do you want your lift car?

---



**NOTE:** in terms of colours, materials and fittings, the designs pictured in this catalogue represent only a few of the many possibilities available across our full range of models. Do not hesitate to consult us if you want to explore the alternatives.



# The 210 Series

The 210 series offers lift cars perfectly suited to all kinds of building projects, a functional design based on modular construction, offering a wide choice of up-to-date colours and built with high-quality materials chosen for their durability and resistance to wear.

---

## **Great design and the versatility to fit in well with any building**

It is very hard to go wrong with the 210 model series: these lift cars are designed so that they can be harmoniously adapted to any building environment.

---

Rated loads: **available up to 1275 Kg.**

**Simplicity:** the lift car is supplied with the lighting and operating panel pre-wired. Unit assembly is easy and quick, and each is delivered with all the detailed information and documentation required.

The lift cars are built in accordance with the European Lifts Directive **2014/33/EU**, and are available in compliance with the harmonised European standards **EN 81-70** (disability), **EN 81-71** (vandal resistance) and **EN 81-72** (firefighters).

**Customised individual design:** special wall, floor and ceiling finishes are available on request. Cars can also be delivered ready for final fitting (light fixtures, flooring) by others.







## Car construction

The lift cars in the **210 Series** are built in **sheet steel** and finished with **plastic laminates** in a wide range of colours, or in **stainless steel** in a choice of different textures.

The **car lighting** can be direct, using **LED spots** or **light panels**, or indirect, using **fluorescent lights** with a range of different **suspended ceiling panels** available.

The **car doors** are supplied with a **stainless-steel** finish in a **choice of textures**, and **the car fronts** can also have a **stainless-steel** finish in a range of **different textures**, as required.

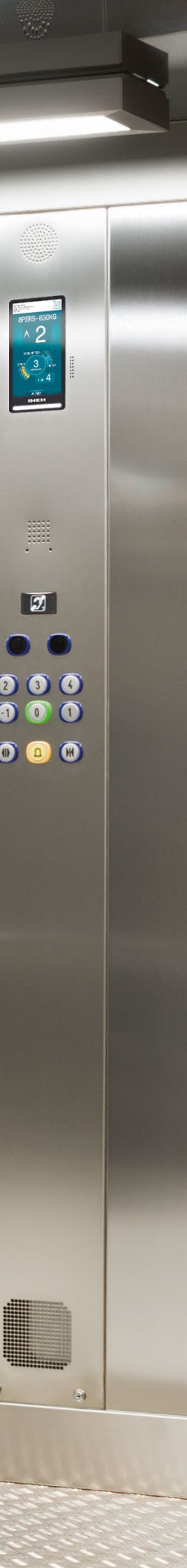
The upper and lower **skirtings** are supplied with a **stainless-steel** finish in different textures.

The **car flooring** can be finished in **hardwearing black rubber**, in **granites** of different shades, in **marble** and in other resistant materials such as **aluminium**, **stainless steel** or **reinforced vinyl**.

The **handrails** are supplied with a **stainless-steel** finish, in a range of different configurations, according to customer choice.

The **mirror** can be supplied to fill **one-third**, **one-half** or the **entire width** of the car's **rear wall**, or we can supply the car **without a mirror**.





## The 220 Series

The 220 series offers lift cars which are robust and hardwearing, and ideal for installation in lift systems designed to carry heavy loads, whether goods or passengers.

---

## Excellent performance in the transport of heavy loads

The 220 Series has been designed to respond effectively to all the vertical transport needs of buildings with high volumes of traffic.

---

**Proven durability and resistance:** the 220 Series lift cars are sturdily built and reinforced to deal comfortably with intensive work conditions over a long period of time. The construction materials used are of top quality and notably hardwearing.

**Additional protective measures:** the cars can be reinforced with buffer rails and kick plates for greater durability and with any other materials and components requested by the customer to maximise their effectiveness over time.

Rated loads: **available from 1300 to 4000 Kg.**

**Simplicity:** the lift car is supplied with the lighting and operating panel pre-wired. Unit assembly is easy and quick, and each is delivered with all the detailed information and documentation required.

The lift cars are built in accordance with the European Lifts Directive **2014/33/EU**, and are available in compliance with the harmonised European standards **EN 81-70** (disability), **EN 81-71** (vandal resistance) and **EN 81-72** (firefighters).

**Customized individual design:** special wall, floor and ceiling finishes are available on request. Cars can also be delivered ready for final fitting (light fixtures, flooring) by others.





## Car construction

**The lift cars in the 220 Series** are built in **sheet steel** and finished with **plastic laminates** in a wide range of colours, or in **stainless steel** in a choice of different textures.

The **car lighting** is direct, using **LED spots** or **fluorescent lights**.

**Ceilings and hatchways** are finished in white **skinplate** or **stainless steel**.

**The car doors** are supplied with a **stainless-steel** finish in a **choice of textures**, and **the car fronts** can also have a **stainless-steel** finish in a range of **different textures**, as required.

The upper and lower **skirtings** are supplied with a **stainless-steel** finish in different textures.

**The car flooring** can be finished in **hardwearing rubber**, in **granites** of various shades, in **marble** and in other resistant materials such as **aluminium**, **stainless steel** or **reinforced vinyl**. It can also be supplied ready for finishing according to each customer's particular requirements.

**The handrails** are supplied with a **stainless-steel** finish, in a range of different configurations, according to customer choice.

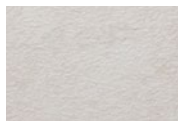
**The mirror** can be supplied to fill **one-half** of the car's **rear wall** (maximum dimensions: 1400mm width, 1180mm height), or the **entire wall** (fitted in two pieces).

---

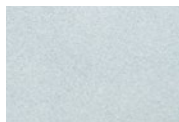
 Walls

---

Skinplate



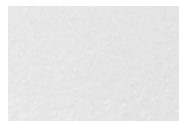
P222



P260



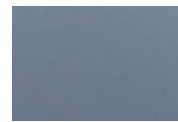
P270



P280



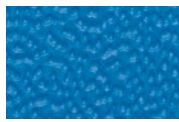
P412



P422



P432



P201



P202



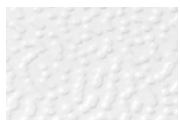
P203



P204



P205



P206



P208



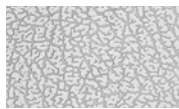
P209

---

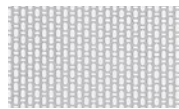
Stainless



Stainless



Elephant skin



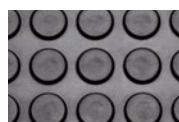
Stainless Linen





# Flooring

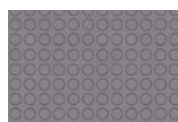
## Rubber flooring



S32GN



S45GN



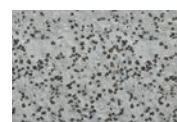
S42GG



S52GN

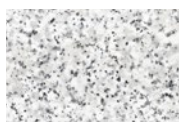


S62GG



S42GB

## Granite



Pearl Gray



Clear Labrador



Black Labrador

## Marble



White Italia



Brown Portuguese

## Aluminium



S3AL

## Stainless steel



S2\_I



S35\_I

---



# Car lighting

---

## 210 Series



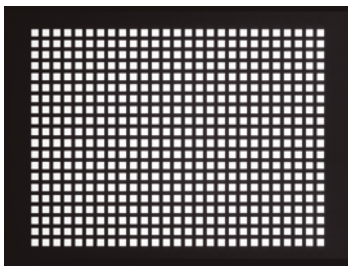
L350



L760



L750



\*Ref. 401



LED Spot

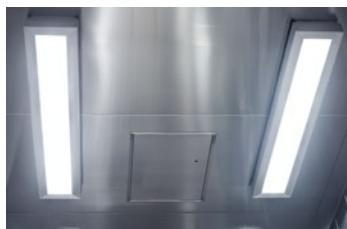
*\* Available in stainless steel or spray-painted in RAL9005*

---

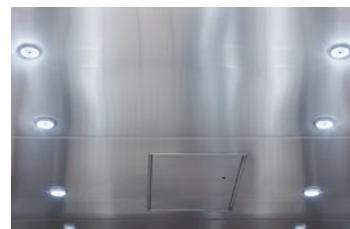
## 220 Series



F-E



F-S



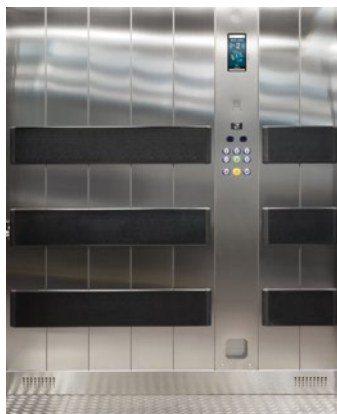
Spot Led

## Buffer rails

### 220 Series



PL\_MS



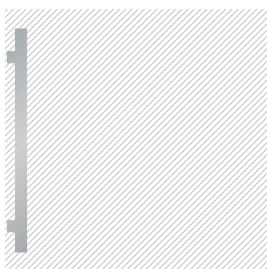
PL\_PVC



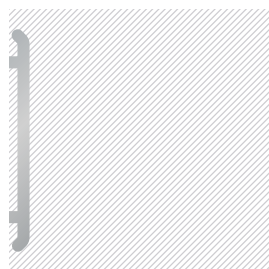
PL\_I

## Handrails

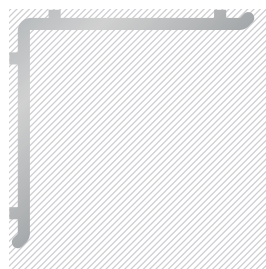
### Stainless steel



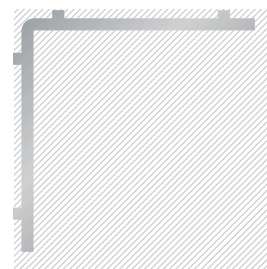
PSI 1



PSI 2



PSI 3



PSI 4

# Operating panels, push-buttons, key switches & displays

## Car operating panels



BCE1

BCE2

BCCE\*

## Push-buttons



PCEN

PCEB

PCIN

PCMT

## Special-function key switches



PCENK

PCMTK

PCSTK

## Displays



Smartech (7")

DCEGH (5")

DEEPV

DCEPH

\* Available as flush or surface-mounted



# Operating panels, push-buttons, key switches & displays

## Landing operating panels



BEE1      BEE2      BEE3      BEE4

## Push-buttons



PEEN      PEIN      PEMT

## Surface-mounted landing indicators

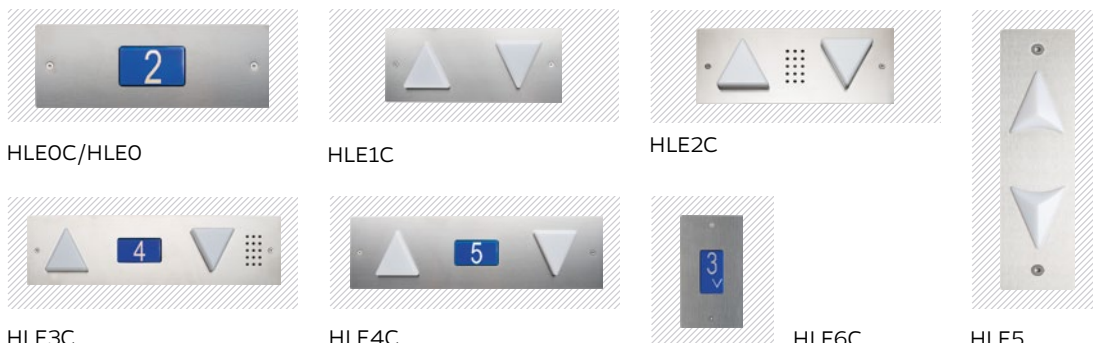


HLE1      HLE2

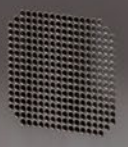


HLE3      HLE4

## Flush-mounted landing indicators



HLE0C/HLE0      HLE1C      HLE2C      HLE5  
 HLE3C      HLE4C      HLE6C



# The 310 Series

We have kept the 310 Series in production for many years because of its outstanding success with our customers. It is a lift car with the cleanest of lines, extremely versatile and adaptable, robust and hardwearing. It is now updated, and it is available with an extensive series of optional extras. The safest possible bet for any serious building project.

---

## Great design and flexibility

Its excellent interior finishes and the wide range of colours and materials available for customer selection make the 310 Series the ideal choice when looking for a top-quality lift car with a design standard to match.

---

**Guaranteed durability:** the 310 Series offers very robust, long-lasting and hardwearing lift cars eminently suitable for the transport of passengers and loads in high-traffic conditions.

Rated loads: **available up to 1275 Kg.**

**Simplicity:** the lift car is supplied with the lighting and operating panel pre-wired. Unit assembly is easy and quick, and each is delivered with all the detailed information and documentation required.

**Lift cars:** built in accordance with the European Lifts Directive **2014/33/EU**, they are available in compliance with the harmonised European standards **EN 81-70** (disability), **EN 81-71** (vandal resistance) and **EN 81-72** (firefighters).

**Customised individual design:** special wall, floor and ceiling finishes are available on request. Cars can also be delivered ready for final fitting (light fixtures, flooring) by others.







6000-5000  
S

6000-5000  
2  
3  
4  
LORDS



- 3
- 4
- 1
- 2
- 1
- 6
- 0
- 0
- 0
- 0
- 0
- 0



## Car construction

**The lift cars in the 310 Series** are built in **galvanised sheet steel**, finished with **high-pressure laminates** in a wide range of colours, or in **stainless steel** with a choice of different textures.

**The car lighting** can be direct, using **LED spots** or **light panels**, or indirect, using **fluorescent lights** with a range of different **suspended ceiling** panels available in attractive designs.

**The car doors** are supplied with a **stainless-steel** finish in a choice of textures, and **the car fronts** can also have a **stainless-steel** finish in various textures, as required.

**The upper and lower skirtings** are supplied with a **stainless-steel** finish, also in a choice of textures.

**The car flooring** can be finished in **hardwearing rubber**, in **granites** of various shades, in **marble** and in other resistant materials such as **aluminium**, **stainless steel** or **reinforced vinyl**.

**The handrails** are supplied with a **stainless-steel** finish, available in a range of different configurations, according to customer choice.

**The mirror** can fill **one-third**, **one-half** or **the entire width** of the car's **rear wall**, or we can supply the car **without a mirror**.



# The 350 Series

The 350 Series gives you the chance to order a completely unique and made-to-measure lift car. Tailor-made according to customer taste, designed to match the style of its setting, personalised with a company logo or emblem - the 350 Series offers all this, and a great deal more.

---

*\* To print an image, reduce it to at least 25% of its original size, and use CMYK chromatic composition at no less than 300 dpi.*

### **A one-of-a-kind lift car**

A lift car with a landscape, city skyline or your company logo taking up an entire wall gives your building its own unique and unforgettable touch – a silkscreened panel, entirely of your choice.

---

**Guaranteed durability:** the 350 Series offers very robust, long-lasting and hardwearing lift cars eminently suitable for the transport of passengers and loads in high-traffic conditions.

Rated loads: **available to 1275 Kg.**

**Simplicity:** the lift car is supplied with the lighting and operating panel pre-wired. Unit assembly is easy and quick, and each is delivered with all the detailed information and documentation required.

**Lift cars:** built in accordance with the European Lifts Directive **2014/33/EU**, they are available in compliance with the harmonised European standards **EN 81-70** (disability), **EN 81-71** (vandal resistance) and **EN 81-72** (firefighters).

**Customised individual design:** special wall, floor and ceiling finishes are available on request. Cars can also be delivered ready for final fitting (light fixtures, flooring) by others.







## Car construction

**The 350 Series lift cars** are built with **galvanised-steel sheeting** finished in **high-pressure laminates** and available in a wide range of colours, or in **stainless steel** with a choice of textures and the rear wall is finished with a **silkscreened** panel to a design of the customer's choice, protected by **glass sheeting**.

**The car lighting** can be direct, using **LED spots** or **light panels**, or indirect, using **fluorescent lights**, with a range of different **suspended ceiling panels** available. The cars can be supplied **without lighting fittings**, should customers want to have them fitted themselves.

**The car doors** are supplied with a **stainless-steel** finish in a choice of textures, and **the car fronts** can also be finished in **stainless steel**, in a range of **textures**, as required.

**The upper and lower skirtings** are supplied with a **stainless-steel finish** in different textures.

**The car flooring** can be finished in **hardwearing rubber**, in **granites** of various shades, in **marble** and in other resistant materials such as **aluminium**, **stainless steel** or **reinforced vinyl**. Or it can be supplied ready for finishing according to each customer's particular tastes.

**The handrails** are supplied with a **stainless-steel** finish, in a range of different configurations, as chosen by the customer.



## The 550 Series

Our much-admired 550 series, with its updated design, offers luxurious and sophisticated lift cars which combine the use of elegant and cutting-edge materials with stainless steel in various finishes.

A classic, triumphantly revitalised for demanding surroundings, impressive in its every detail.

---

## Luxury and comfort

Each car in the 550 Series, with its sophisticated design and carefully thought-out detailing, adds an exclusive and de-luxe look to any setting.

---

**Guaranteed durability:** the 550 Series offers very robust, long-lasting and hardwearing lift cars eminently suitable for the transport of passengers and loads in high-traffic conditions.

Rated loads: **available to 1275 Kg.**

**Simplicity:** the lift car is supplied with the lighting and operating panel pre-wired. Unit assembly is easy and quick, and each is delivered with all the detailed information and documentation required.

**Lift cars:** built in accordance with the European Lifts Directive **2014/33/EU**, they are available in compliance with the harmonised European standards **EN 81-70** (disability), **EN 81-71** (vandal resistance) and **EN 81-72** (firefighters).

**Customised individual design:** special wall, floor and ceiling finishes are available on request. Cars can also be delivered ready for final fitting (light fixtures, flooring) by others.





# Car construction

**The 550 Series lift cars** are built in **galvanised sheet steel**, faced with **stainless steel** and then finished with horizontally-mounted panels of **high-pressure laminates** available in a wide range of colours and designs.

**The car lighting** can be direct, using **LED spots** or **light panels**, or indirect, using **fluorescent lights** with a range of different suspended ceiling panels available.

**The car doors** are supplied with a **stainless-steel** finish in a choice of textures, and **the car fronts** can also be finished in **stainless steel**, in various textures, as required.

**The upper and lower skirtings** are supplied with a **stainless-steel** finish, also in a choice of textures.

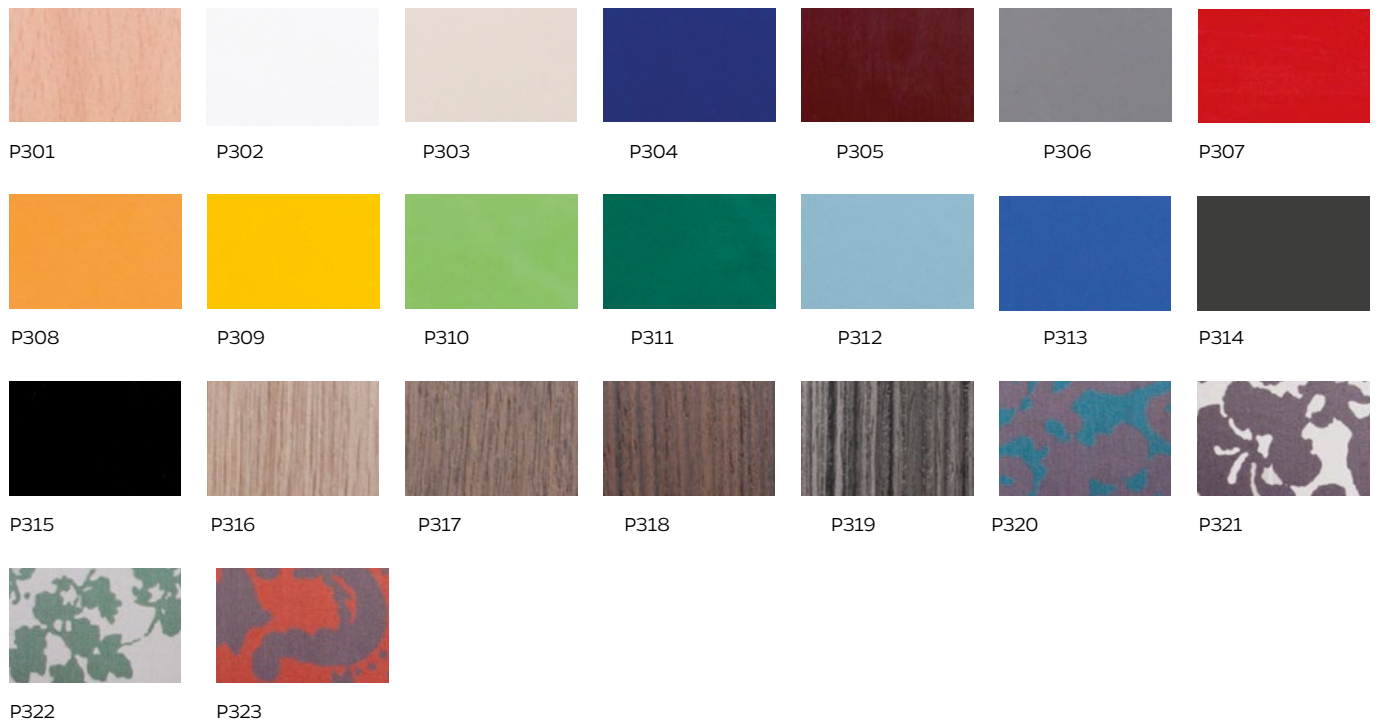
**The car flooring** can be finished in **hardwearing rubber**, in **granites** of various shades, in **marble** and in other resistant materials such as **aluminium**, **stainless steel** or **reinforced vinyl**.

**The handrails** are supplied with a **stainless-steel finish**, available in a range of different configurations, according to customer choice.

**The mirror** can fill **one-half** of the car's rear wall or its **entire width** (at 300mm from the floor). Or we can supply the car **without a mirror**.

## Walls

### High-Pressure laminates



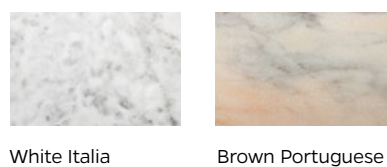
## Flooring

### Rubber



### Granite

### Marble





## Car lighting



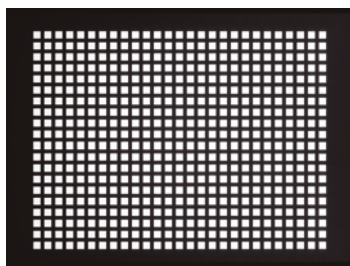
L350



L760



L750



\*Ref. 401

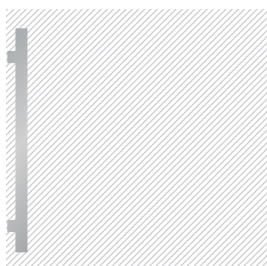


LED Spot

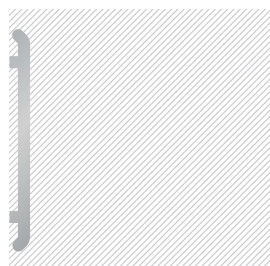
*\* Available in stainless steel or spray-painted in RAL9005*

## Handrails

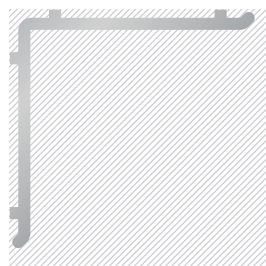
Stainless steel



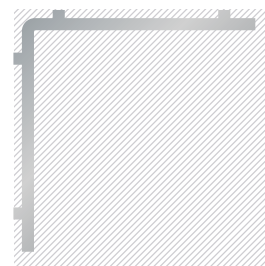
PSI 1



PSI 2



PSI 3



PSI 4

# Operating panels, push-buttons, key switches & displays

## Car operating panels



BCCE\*

## Push-buttons



PCEN    PCEB    PCIN    PCMT

## Special-function key switches



PCENK    PCMTK    PCSTK

## Displays



Smartech (7")



DCEGH (5")



DEEPV



DCEPH

\*Available as flush or surface mounted

# Operating panels, push-buttons, key switches & displays

## Landing operating panels



BEE1

BEE2

BEE3

BEE4

## Push-buttons



PEEN

PEIN

PEMT

## Surface-mounted landing indicators



HLE1

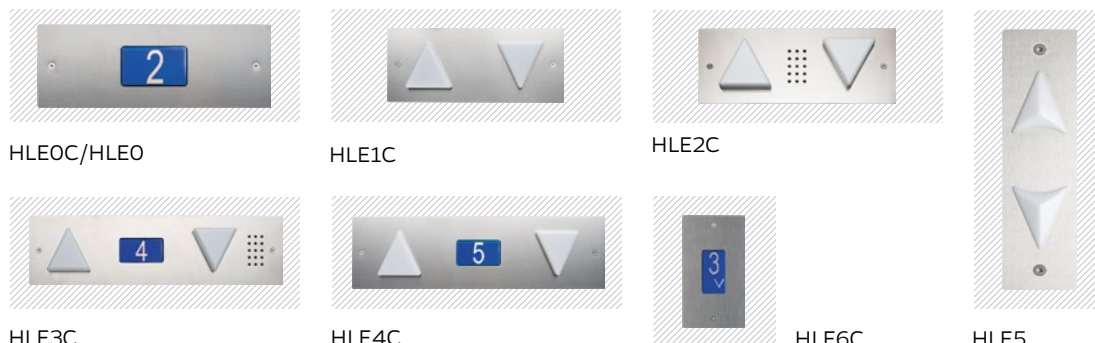
HLE2



HLE3

HLE4

## Flush-mounted landing indicators



HLE0C/HLE0

HLE1C

HLE2C

HLE3C

HLE4C

HLE6C

HLE5





## The 710 Series

Classical elegance. Timeless style. Tradition and craftsmanship. Feelings inevitably evoked by the 710 Series lift car. Cars finished in beautiful hardwoods which add an inimitable warmth and richness to the very finest architectural surroundings.

---

## Timeless luxury

The 710 Series is so much more than just another lift car. The beauty of its materials, its classical style and its finely crafted finish make each car a unique little work of art.

---

Rated loads: **available to 1275 Kg.**

**Simplicity:** the lift car is supplied with the lighting and operating panel pre-wired. Unit assembly is easy and quick, and each is delivered with all the detailed information and documentation required.

**Lift cars:** built in accordance with the European Lifts Directive **2014/33/EU.**

**Customised individual design:** special wall, floor and ceiling finishes are available on request. Cars can also be delivered ready for final fitting (light fixtures, flooring) by others.







## Car construction

**The 710 series lift car** is built over a **metal structure**, finished with **solid oak** or **chestnut panelling** and trimmed with **natural** or **gold-finished stainless steel**, as required.

**The car lighting** is direct using **LED spots**.

**The car doors** are supplied with a **stainless-steel** finish in a choice of textures, and **the car fronts** can also be finished in **stainless steel** in a range of textures, as required.

**The lower skirting** is of **stainless steel** with a **gold finish**.

**The car flooring** can be finished in **hardwearing rubber**, in **granites** of various shades, in **marble** and in other resistant materials such as **aluminium**, **stainless steel** or **reinforced vinyl**.

**The handrails** are supplied finished in **solid oak** and with side details in **natural or gold-finished stainless steel**.

**The safety-glass** mirror is to the **full height** and width of the rear wall and is **timber-framed**, with **natural or golden stainless-steel detailing**.

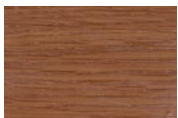
---



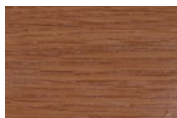
# Walls

---

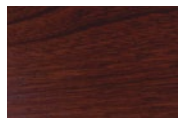
## Wood



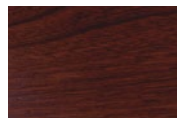
Chestnut 7101  
with golden  
stainless steel



Chestnut 7101  
with stainless steel



Oak with golden  
stainless steel



Oak with stainless  
steel

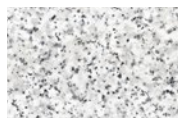
---



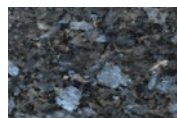
# Flooring

---

## Granite



Pearl Gray



Clear Labrador



Black Labrador

## Marble



White Italia



Brown Portuguese

---

 Car lighting



LED Spot



I LED

---

 Handrails

---

Chestnut or oak



# Operating panels, push-buttons, key switches & displays

## Car operating panel



BC300

## Push-buttons



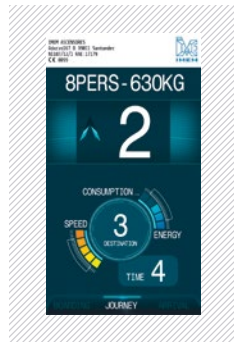
PCEN      PCEB      PCIN      PCMT

## Special-function key switches



PCENK      PCMTK      PCSTK

## Displays



Smartech (7")



DCEGH (5")



DEEPV



DCEPH

# Operating panels, push-buttons, key switches & displays

## Landing operating panels



BEE1      BEE2      BEE3      BEE4

## Push-buttons



PEEN      PEIN      PENT

## Surface-mounted landing indicators

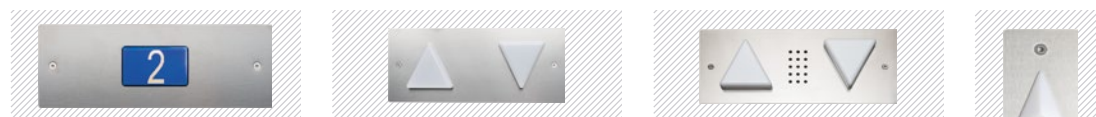


HLE1      HLE2



HLE3      HLE4

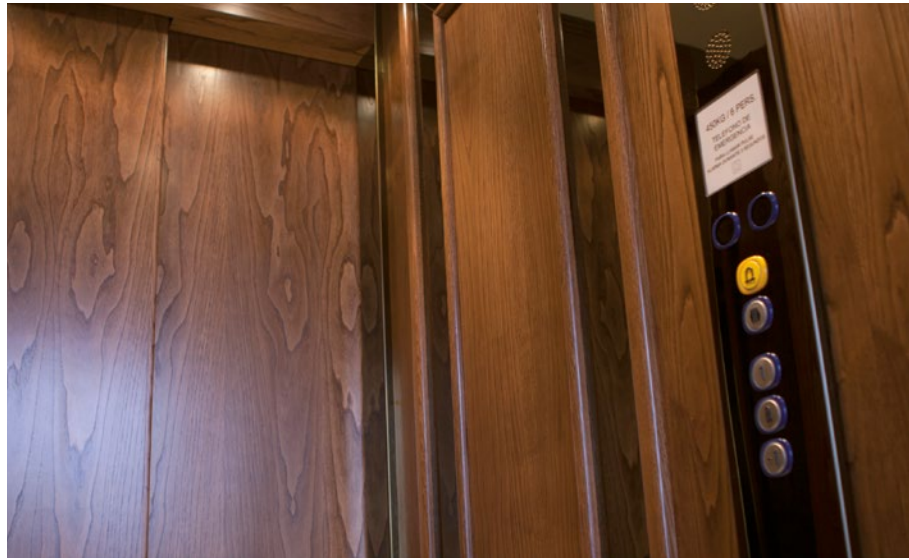
## Flush-mounted landing indicators



HLEOC/HLE0      HLE1C      HLE2C



HLE3C      HLE4C      HLE6C      HLE5

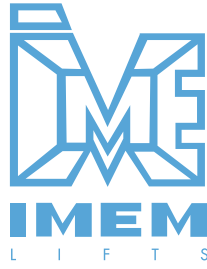


# How do you want your lift car?

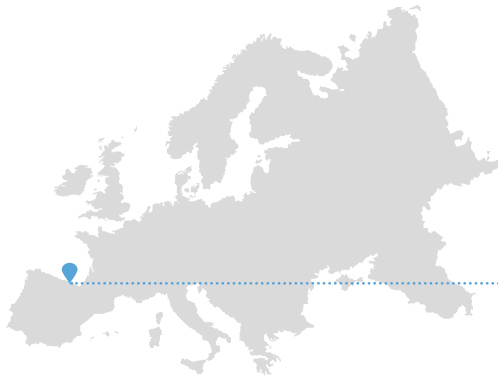
We design and manufacture made-to-measure lift cars to suit the exact needs and tastes of our customers.

The range of materials, finishes, lighting and display options, and of equipment upgrades and extras that we offer is practically limitless and guarantees that each lift car will be perfectly in tune with the technical, operational and design requirements of the building that it serves.

---



## Designed and manufactured in Europe



- ✓ All the products we design are produced entirely in-house in our own European factories – ever since 1968.
- ✓ Meeting all the European quality standards.
- ✓ Particularly regarding safety, sustainability and environmental care.



### EXPORT DEPARTMENT

C/ Adarzo 167-B · 39011 Peñacastillo · Santander, Spain

**Tel:** (00 34) 942 34 60 20 **Fax:** (00 34) 942 35 53 64 **E-mail:** comex@imem.com

[www.imem.com](http://www.imem.com)



EFQM  
Business  
Excellence



ISO 9001  
Quality  
Management



OHSAS 18001  
Occupational  
Health & Safety  
Management



ISO 14001  
Environmental  
Management

All the information contained in this catalogue is the property of IMEM Lifts. The partial or total reproduction of its contents without the prior written authorisation of IMEM S.L. is strictly forbidden. The distribution or copying of photographs, logos or any other graphic material contained herein is strictly forbidden, IMEM Lifts being the acknowledged sole proprietor of all intellectual property rights pertaining.

IMEM reserves the right to change the specifications, options and colours contained herein. All images in this catalogue are representative only. Colours and materials may not correspond exactly to the finished products.